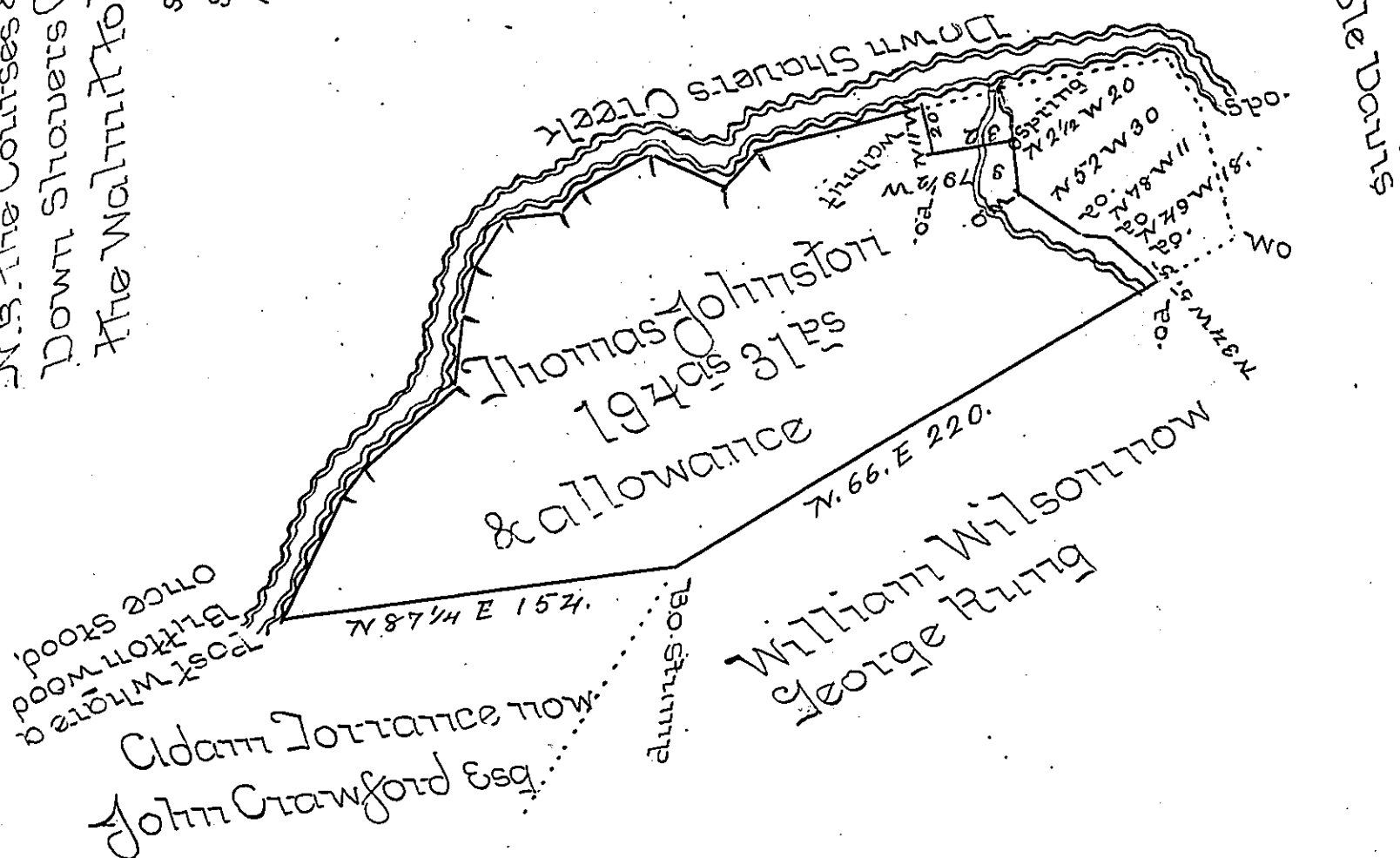


N.B. The Courses & distances
Down Showers Creek from
the Walnut to the post are

S 79 1/2 W. 69.
S 48 W. 16.
N 67 W. 37.
S 66 W. 30.
S 57 W. 12.
S 88 1/2 W. 23.
S 37 W. 19.
S 22 W. 18.
S 12 W. 30.
S 57 1/2 W. 78.
S 76 W. 14.
S 30 W. 47.2
960.2



Situate in West township Huntingdon County containing one hundred & ninety four Acres 31 perches & allowance of six per Cent for Roads &c. The above is part of a tract of land which was surveyed the 24th day of April 1766. In pursuance of a Warrant ^{granted} to Thomas (or Wm) Johnston dated the 3rd June 1763. it then was said to contain 204.1 Acres & Allowance this part Resurveyed and divided from the Residue of said tract March 23rd 1822

By Wm Reed D.S.

To Samuel Cochran Esq
Surveyor General

IN TESTIMONY that the above is a copy of the original remaining on file in the Department of Internal Affairs of Pennsylvania, made conformably to an Act of Assembly approved the 16th day of February, 1833, I have hereunto set my Hand and caused the Seal of said Department to be affixed at Harrisburg, this first day of November 1898.

James W. Latta
Secretary of Internal Affairs.